

Sheridan Hills

"HOMES WYOMING FAMILIES CAN AFFORD"

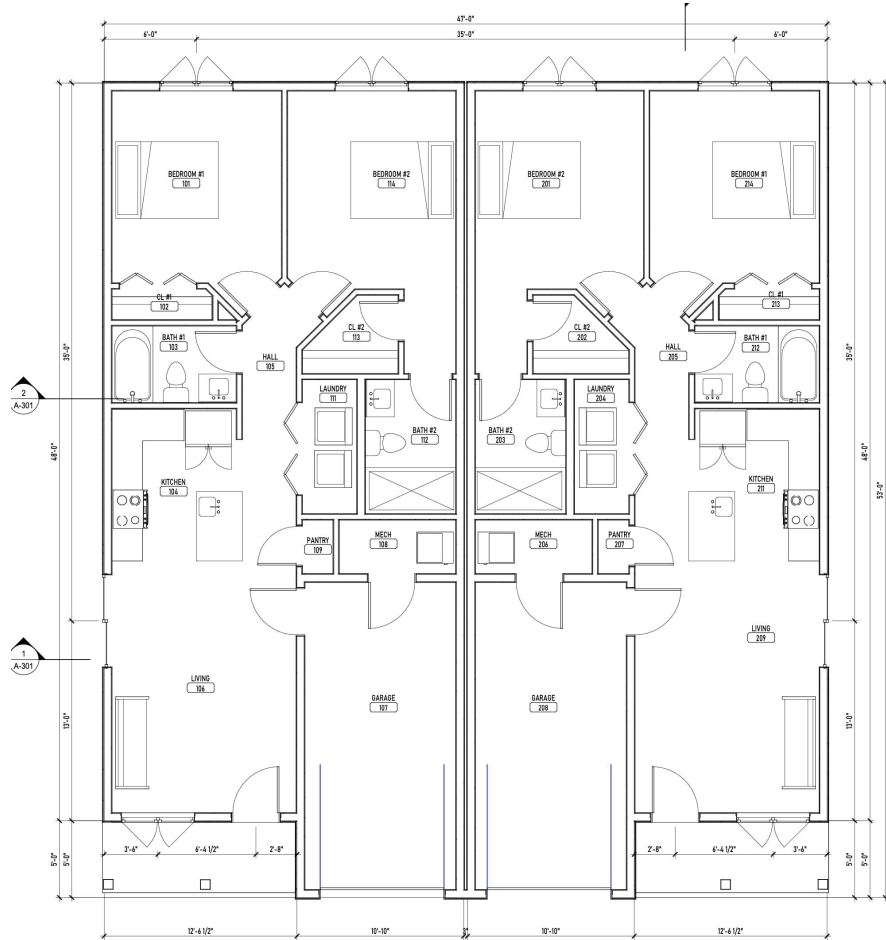


SITE PLAN



PAIRED PATIO HOMES

GARDEN VIEW MODEL

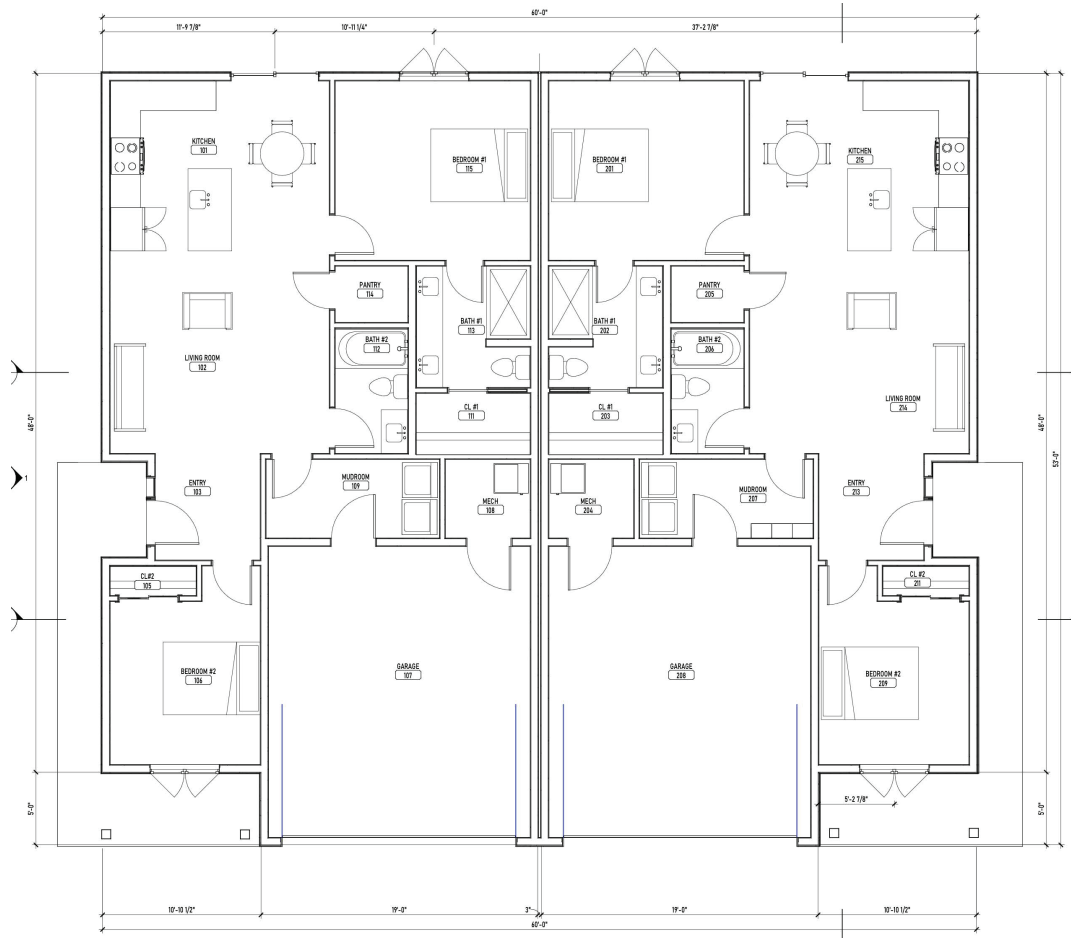


Area Schedule - Gross Footprint	
Name	Area
FIRST LEVEL	
GARAGE A	233 SF
Living Space	867 SF
Living Space	867 SF
GARAGE B	233 SF

STARTING AT \$310,700.00

PAIRED PATIO HOMES

PARK VIEW MODEL



Area Schedule - Gross Footprint	
Name	Area
FIRST LEVEL	
GARAGE A	405 SF
Living Space	1018 SF
Living Space	1018 SF
GARAGE B	406 SF

STARTING AT \$336,800.00

THE VISION

Sheridan, Wyoming based housing developer and builder Carlton Construction/Carlton Homes has submitted a preliminary plat to build over 80 attainable homes within North Main Sheridan Gateway District.

Sheridan Hills Development, phase one, will consist of single-family homes, townhomes and single-level paired patio homes. Sheridan Hills is a proposed housing development purposely planned to supply much needed homes that Wyoming families can afford.

COMMUNITY AMENITIES

- The preliminary plat includes a private park for those that live in The Hills. Hills Park will be located just above North Main Park and pathway system for easy connectivity. The Hills Park is private to Sheridan Hills owners, family and friends.
- Snow Removal (Townhomes & Paired Patio Homes)
- Complete Landscape Installation (Townhomes & Paired Patio Homes)
- Landscape Maintenance: Tree Trimming, Weeding, & Lawn Fertilizing (Townhomes & Paired Patio Homes)
- Carlton Construction's Comprehensive 1-5-10 Year Warranty

Sheridan Hills

"HOMES WYOMING FAMILIES CAN AFFORD"

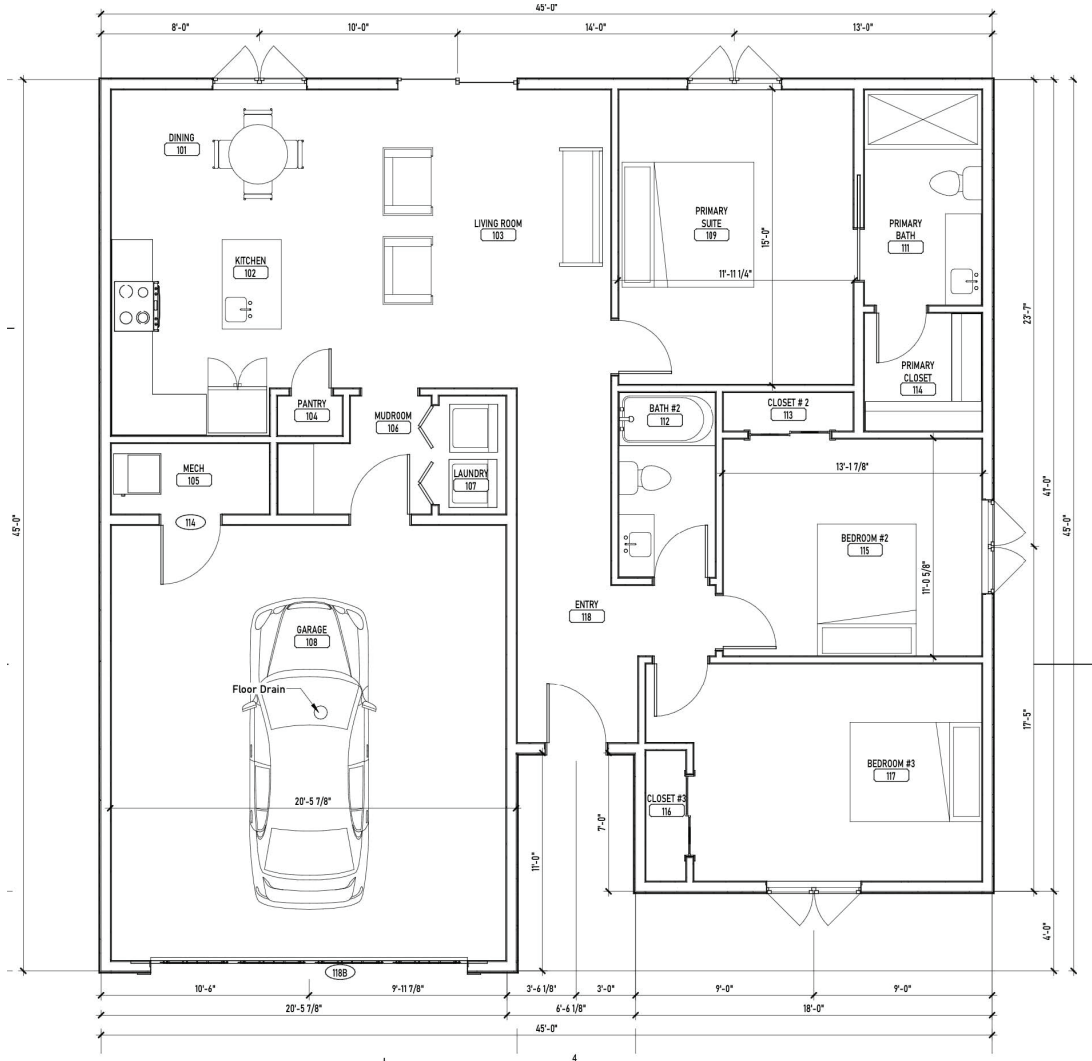


SITE PLAN



SHERIDAN HILLS SINGLE FAMILY HOMES

UNIVERSAL FLOOR PLAN

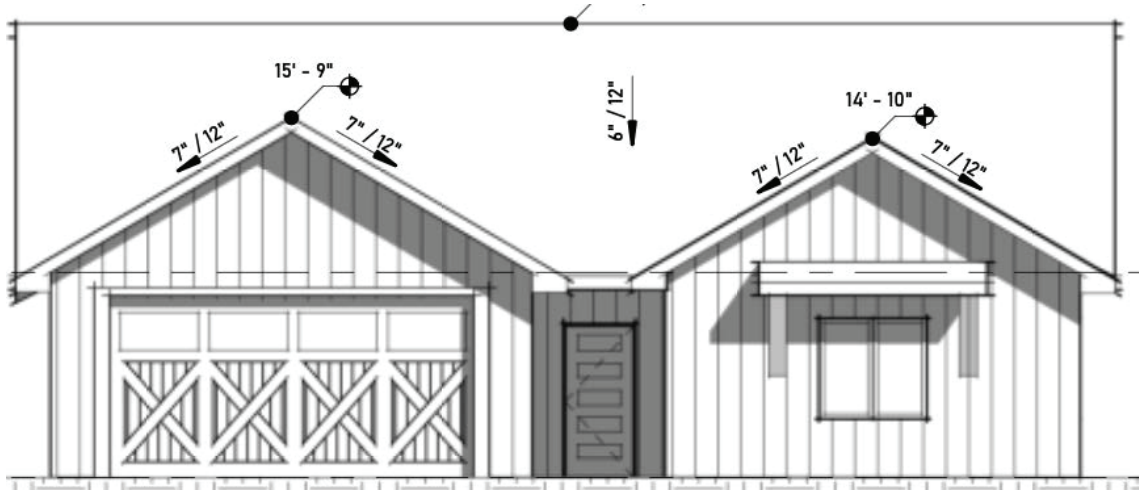


Area Schedule - Gross Footprint	
Name	Area
FIRST LEVEL	
GARAGE A	482 SF
Living Space	1306 SF

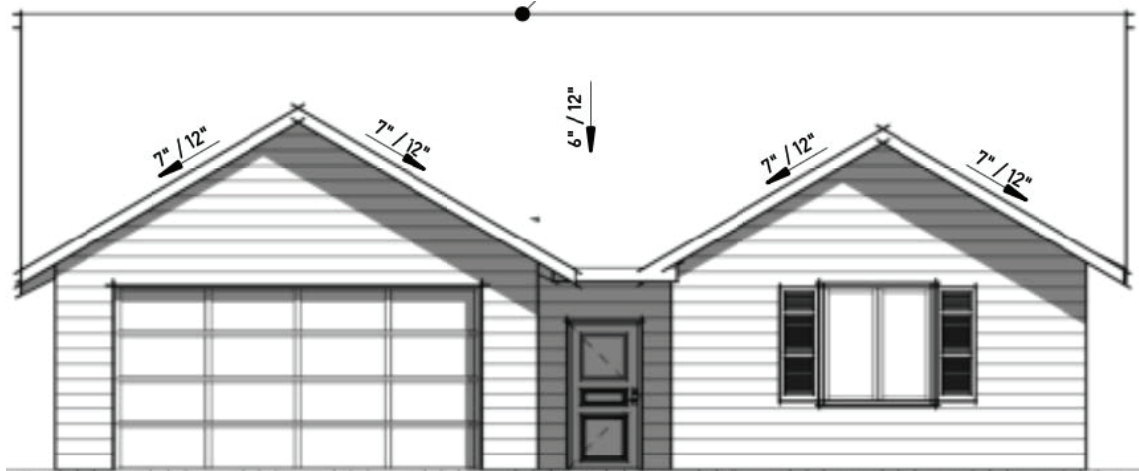
STARTING AT \$397,700.00



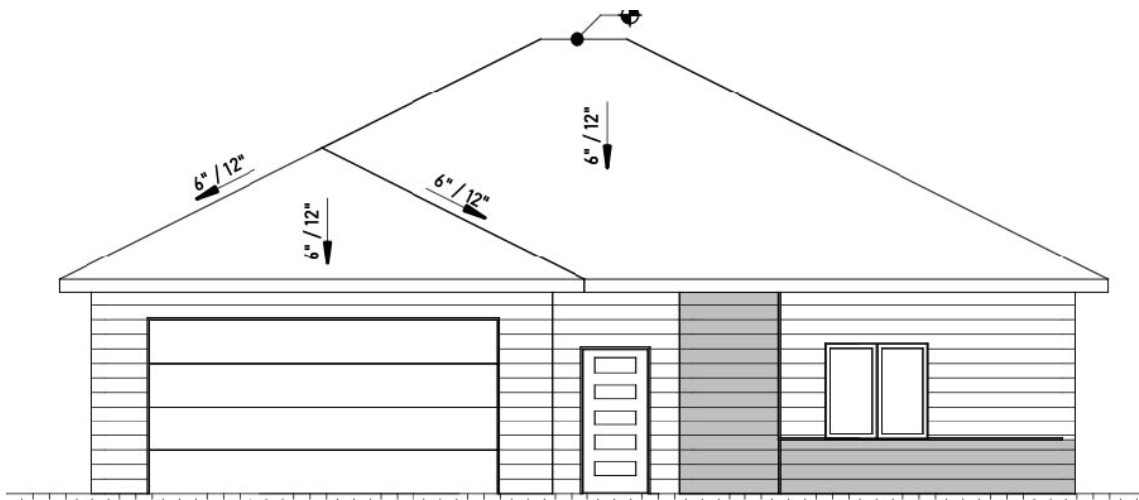
Single Family Farmhouse Elevation:



Single Family Craftsman Elevation:



Single Family Modern Elevation:



THE VISION

Sheridan, Wyoming based housing developer and builder Carlton Construction/Carlton Homes has submitted a preliminary plat to build over 80 attainable homes within North Main Sheridan Gateway District.

Sheridan Hills Development, phase one, will consist of single-family homes, townhomes and single-level paired patio homes. Sheridan Hills is a proposed housing development purposely planned to supply much needed homes that Wyoming families can afford.

COMMUNITY AMENITIES

- The preliminary plat includes a private park for those that live in The Hills. Hills Park will be located just above North Main Park and pathway system for easy connectivity. The Hills Park is private to Sheridan Hills owners, family and friends.
- Snow Removal (Townhomes & Paired Patio Homes)
- Complete Landscape Installation (Townhomes & Paired Patio Homes)
- Landscape Maintenance: Tree Trimming, Weeding, & Lawn Fertilizing (Townhomes & Paired Patio Homes)
- Carlton Construction's Comprehensive 1-5-10 Year Warranty
- Single Family Lot Homes Front Yard Landscaping Included

*Yard Maintenance Not Included

Sheridan Hills

"HOMES WYOMING FAMILIES CAN AFFORD"

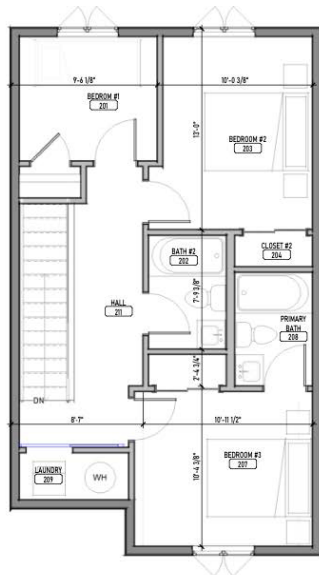


SITE PLAN

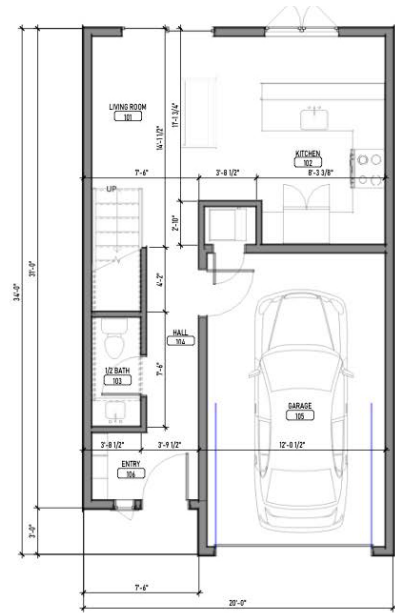


SHERIDAN HILLS TOWNHOMES

THE ASPEN PLAN



2 LEVEL 2 - FLOOR PLAN
Scale: 1/8" = 1'-0"



1 LEVEL 1 - FLOOR PLAN
Scale: 1/8" = 1'-0"



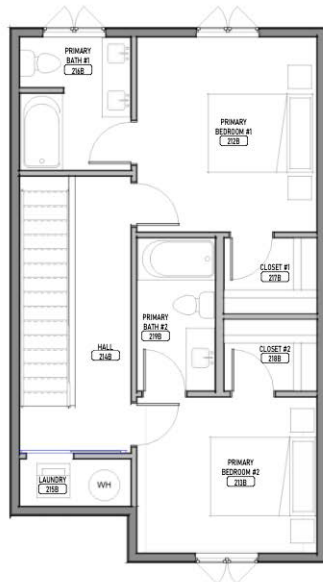
Area Schedule - Gross Footprint

Name	Area
GARAGE	235 SF
FIRST LEVEL	358 SF
SECOND LEVEL	603 SF
Living Space	961 SF

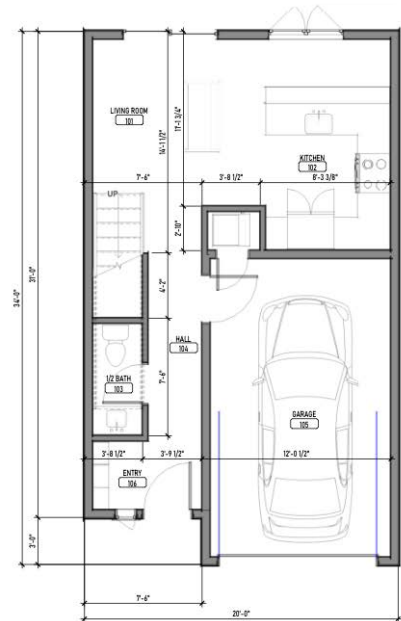
STARTING AT \$279,000.00

SHERIDAN HILLS TOWNHOMES

THE SPRUCE PLAN



2 LEVEL 2 - FLOOR PLAN
Scale: 1/4" = 1'-0"



Area Schedule - Gross Footprint	
Name	Area
GARAGE	235 SF
FIRST LEVEL	358 SF
SECOND LEVEL	603 SF
Living Space	961 SF

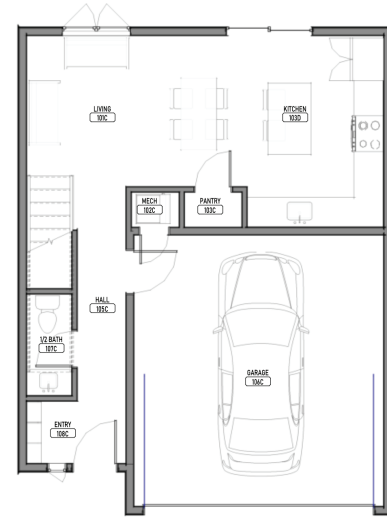
STARTING AT \$279,000.00

SHERIDAN HILLS TOWNHOMES

THE REDWOOD PLAN



5 LEVEL 2 - FLOOR PLAN 26'
Scale: 1/4" = 1'-0"



4 LEVEL 1 - FLOOR PLAN
Scale: 1/4" = 1'-0"



Area Schedule - Gross Footprint 26'

Name	Area
GARAGE	342 SF
FIRST LEVEL	462 SF
SECOND LEVEL	800 SF
Living Space	1262 SF

STARTING AT \$345,000.00

THE VISION

Sheridan, Wyoming based housing developer and builder Carlton Construction/Carlton Homes has submitted a preliminary plat to build over 80 attainable homes within North Main Sheridan Gateway District.

Sheridan Hills Development, phase one, will consist of single-family homes, townhomes and single-level paired patio homes. Sheridan Hills is a proposed housing development purposely planned to supply much needed homes that Wyoming families can afford.

COMMUNITY AMENITIES

- The preliminary plat includes a private park for those that live in The Hills. Hills Park will be located just above North Main Park and pathway system for easy connectivity. The Hills Park is private to Sheridan Hills owners, family and friends.
- Snow Removal (Townhomes & Paired Patio Homes)
- Complete Landscape Installation (Townhomes & Paired Patio Homes)
- Landscape Maintenance: Tree Trimming, Weeding, & Lawn Fertilizing (Townhomes & Paired Patio Homes)
- Carlton Construction's Comprehensive 1-5-10 Year Warranty